



Stakeholders Meeting



# BI-STATE SAGE-GROUSE

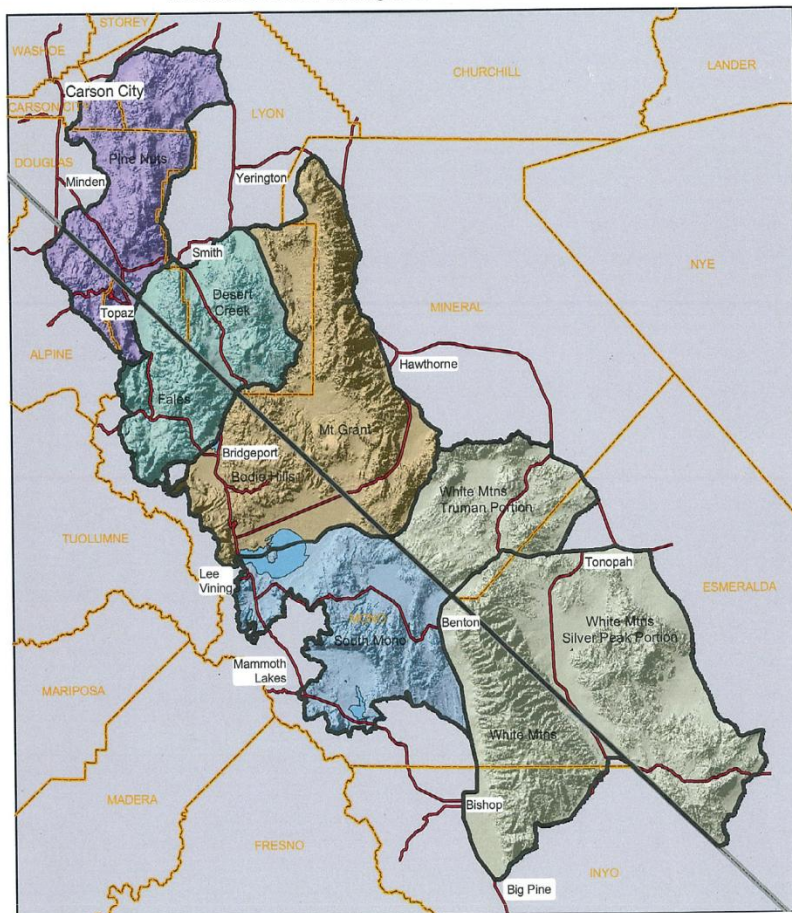


# Bi-State Sage-Grouse: What is it?

- ✿ Also known as the Mono Basin Sage-Grouse
- ✿ Is a distinct population group of the Greater Sage-Grouse
- ✿ Is a USFWS candidate species
- ✿ Higher listing priority (3)
- ✿ Shorter time frame (September 2013)

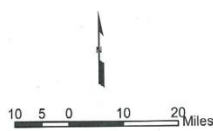


Overview of Sage Grouse Management Units  
within the Bi-State Planning Area of California and Nevada



**Legend**

- Management Unit
- County Line
- State Line
- Highways



April, 2004



Vicinity Map

Located in the Mono Basin area of California and Nevada.

Includes portions of Carson City, Lyon, Mineral, Esmeralda, and Douglas Counties in Nevada and portions of Alpine and Inyo Counties, and most of Mono County, in California.

Six Population Management Units (PMU's)

Occurs on lands managed by the BLM, Forest Service, Nevada and California state agencies, and on private lands.

# Risks: Similar to Greater Sage-Grouse

- ✿ Loss of sagebrush grasslands
  - Urbanization
  - Infrastructure – roads, power lines
  - Mining
  - Energy development
  - Grazing
  - Invasive & exotic species
  - Pinyon- juniper encroachment
  - Wildfire
  - Climate change
- ✿ Disease (West Nile Virus) & predation
- ✿ Inadequacy of existing regulatory mechanisms
- ✿ Other natural or human caused factors (e.g., Recreational Activities)



# Unique Risks



- ❖ Low number of local populations
- ❖ Small population sizes
- ❖ Relative isolation
- ❖ Translocation difficult



# United Effort

## Entities

- BLM – California & Nevada
- Inyo & Humboldt-Toiyabe National Forests
- US Fish & Wildlife Service
- Natural Resources Conservation Service
- Nevada Department of Wildlife
- California Department of Fish & Game
- Private landowners
- Non-profit organizations
- Academia
- US Geological Services

## Organization

- Executive Oversight Committee
- Technical Advisory Committee
- Strategy Committee
- Population Management Unit (PMU) Groups

# Timeline 2012

- ❁ **January:** Agencies issue Interim Measures
- ❁ **February:** Sign MOU for coordinating conservation of species
- ❁ **March:** Issue Action Plan for conserving species
- ❁ **May:** Additional surveys are completed
- ❁ **June:** Develop list of projects that respond to Action Plan
- ❁ **Sept.:** **Submit assurance documentation to identify interim regulatory mechanisms for conservation of species**

# How to get involved?

- Short term --Site specific projects
- Long term – Plan amendments or revisions





QUESTIONS?

