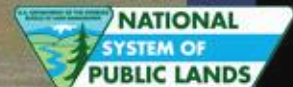


BLM National Greater Sage- Grouse Planning Strategy

**Stakeholder Update
January 18, 2012**

Amy Lueders – State Director, Nevada BLM



BLM National Greater Sage-Grouse Planning Strategy

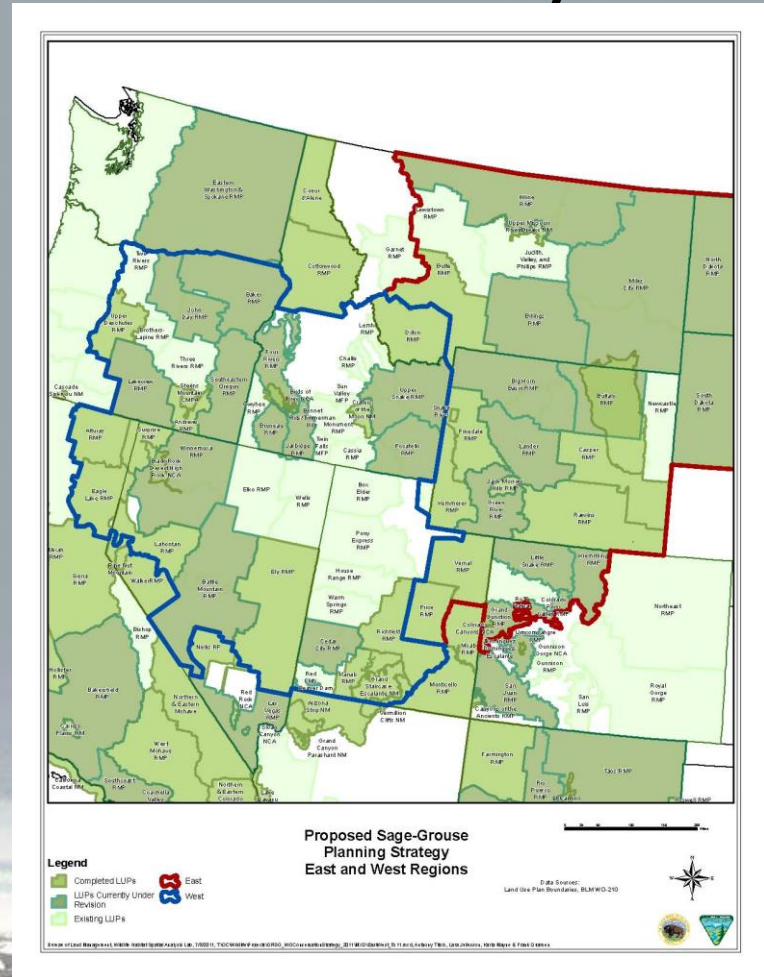
- Develop and implement new or revised regulatory mechanisms through land use planning and appropriate policy, in order to:
 - Conserve and restore greater sage-grouse and their habitats on BLM administered lands on a range-wide basis over the long term, and
 - Ensure conservation measures are carried forward into future planning efforts on BLM land
 - USFS is also cooperating with BLM on sage-grouse conservation efforts

Planning Approach

- Issue national policy and direction to guide interim actions and future planning
- Establish highly coordinated, multi-level, interagency teams that respond to clear national direction
- Incorporate regulatory mechanisms into RMPs at the subregional (state/multi-state) level

Regional Teams; What are they, what areas will they represent, and what will they do?

- Teams will respond to clear national policy while looking at different ecological attributes and threats that are region-specific
- To do this there will be two Regional Teams divided into two broad regions – East and West



Timeline of Critical Steps

Action	When
Establish all teams (NPT, NTT, RMTs, RIDTs, and SIDTs)	Complete & Ongoing
Issue national interim policy (Instruction Memorandum)	Complete – 12/27/11
Publish Notice of Intent to amend land use plans	Published – 12/9/11
Public scoping complete	In Progress Through 2/7/12
Draft EISs published	Second Quarter of FY 13
Final EISs published	First Quarter of FY 14
Records of Decision signed	Fourth Quarter of FY 14

Greater Sage-Grouse Land Use Planning Effort

- Direction on initiation of SG Land Use Planning IM 2012-044 issued 12/27/11:
 - The BLM National Greater Sage-Grouse Land Use Planning IM provides direction to the field on how to utilize the sage grouse conservation measures in the land use planning process.
 - The IM also transmits the conservation elements to consider in the planning efforts developed by the National Technical Team.

Stakeholder Involvement

- Participate in planning process
 - Participate in Scoping Meetings
 - Provide Scoping comments
 - Review and comment on Draft EIS
 - Review final EIS and Proposed plan amendments
- Participate in briefings
- Implement coordinated sage-grouse conservation measures to maintain or enhance sage-grouse populations and habitat

LUP Scoping

- The scoping period ends February 7, 2012
- Final local scoping meeting is in Reno on January 30, 2012
- All scoping comments in the Western Region will be sent to the Nevada State Office

Meeting Locations and Dates

- | | |
|--|--|
| <ul style="list-style-type: none"> • Tonopah, NV - Jan 9 • Boise, ID - Jan 9 | <ul style="list-style-type: none"> • Ely, NV - Jan 10 • Idaho Falls, ID – Jan 10 |
| <ul style="list-style-type: none"> • Elko, NV - Jan 11 • Salmon, ID - Jan 11 | <ul style="list-style-type: none"> • Winnemucca, NV - Jan 12 • Dillon, MT - Jan 12 |
| <ul style="list-style-type: none"> • Lakeview, OR - Jan 17 • Price, UT - Jan 17 | <ul style="list-style-type: none"> • Alturas, CA - Jan 18 • Vernal, UT - Jan 18 |
| <ul style="list-style-type: none"> • Susanville, CA - Jan 19 • Salt Lake City, UT - Jan 19 | <ul style="list-style-type: none"> • Ontario, OR - Jan 23 • Randolph, UT - Jan 23 |
| <ul style="list-style-type: none"> • Baker City, OR - Jan 24 • Snowville, UT - Jan 24 | <ul style="list-style-type: none"> • Burns, OR - Jan 25 • Twin Falls, ID - Jan 25 |
| <ul style="list-style-type: none"> • Prineville, OR - Jan 26 • Pocatello, ID - Jan 26 | <ul style="list-style-type: none"> • Reno, NV - Jan 30 • Richfield, UT - Jan 30 |
| <ul style="list-style-type: none"> • Kanab, UT - Jan 31 | <ul style="list-style-type: none"> • Cedar City, UT - Feb 1 |

Planning Coordination

- BLM staff have developed various national-level documents that can be used by the field to help with the consistency of the EIS-level amendments.
- These documents include an overarching preparation plan, Chapter 1, and Purpose and Need Statement.

Interim Direction – IM 2012-043

- Issued December 27, 2011
- Provides interim conservation policies and procedures for BLM to apply to ongoing and proposed authorizations and activities
- Promotes sustainable Greater Sage-Grouse populations and conservation of its habitat
- In place while BLM develops and decides on long-term conservation measures in RMPs

Proposed Interim Direction

- Nearly All BLM Programs Addressed in Priority Habitat, the Primary Programs include:
 - Vegetation Management
 - Wildfire
 - Rights-of-Way (e.g. renewable energy, roads, powerlines, pipelines)
 - Leasable Minerals (e.g. oil and gas, coal, oil shale, solid minerals)
 - Grazing: Livestock, Wild Horses and Burros

Decision Elevation Process

- *An elevation process was incorporated into the discretionary language with NDOW and FWS involvement. Rest assured -This is NOT business as usual for BLM.*

Conclusion

- Strategy to improve regulatory mechanisms within the next 3 years is ambitious and is not “business as usual” for the BLM
- Multiple, interagency teams is a key component to strategy success
- Success hinges on full involvement of FWS, state wildlife agencies, and other partners



Questions?

SageQuery@blm.gov